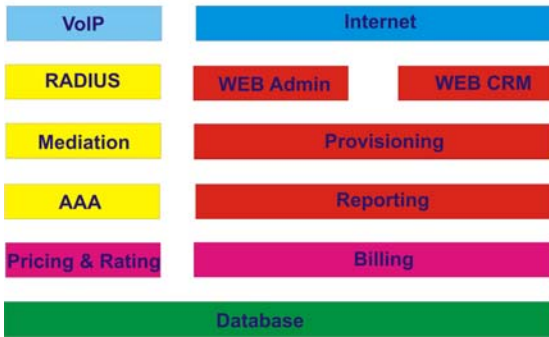




Single Server Active/Standby Setup



TrueBill

**Software Billing Solution
and
Tax Module
Version 2.0**



Fully Featured Telco Billing System

- Offers service independent billing
- Multi-Service Billing
- ~~Delivers~~ Convergent Billing Support

- Branding and Customizing Invoices
- Supports customizable and granular

TrueBill is a unique state of the art convergent billing solution designed from ground up to meet the challenges of the today's dynamic multi-service world. Engineered to cope with the most complex charging problems, TrueBill enables service providers to gain flexibility in all areas of the billing process: pricing, packaging, rating, invoicing, settlement, balance management, reporting, revenue assurance and accounting.

Key Features:

- **Service independent billing**
TrueBill provides billing for any type of service. Administrators can use or create any possible billing parameters to model and create their custom types of services.
- **Multi-Service Billing**
TrueBill allows service providers to quickly and easily package multiple services at the same time in a single offering!
- **Convergent Billing**
Service providers gain the ability to consolidate all technologies into one customer bill.
- **Support for multi-tiered billing**
Multi-tier billing structure featuring charge inheritance and dependencies within the hierarchy of service providers and services

- **Support for value and volume billing models**

Billing can be done based on:

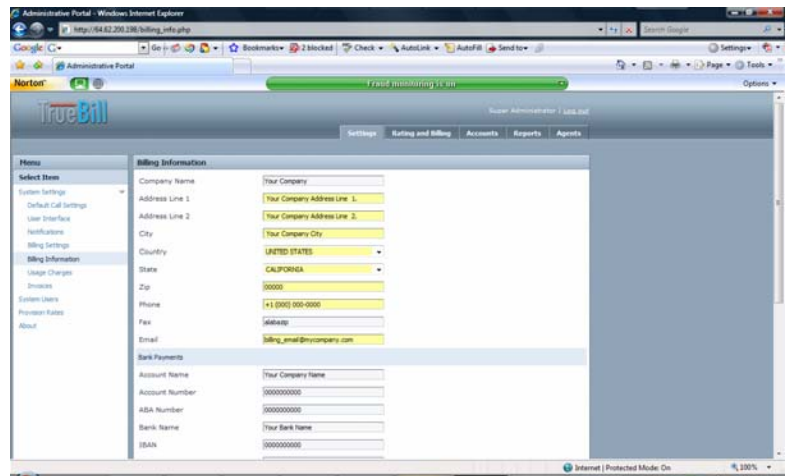
- the value of the service per billing unit
- based on the volume of the service used
- a combination of both

- **Support for event, session, fixed, variable and recurring charging**

Service providers can charge based on the following:

- per occurrence of charge event
- per quantity use
- flat charge
- percentage of charge value
- combination of to the above
- periodic charges can be configured for recurring charges

- **Support of multi CDR charge events**
A single charge event triggers the generation of one or multiple charge records for multiple accounts up the multi-tiered hierarchy.
- **Support for Prepaid and Postpaid billing models**
Service providers are enabled to setup both prepaid and postpaid models in a single



- **Support for customizable and granular taxation**
TrueBill allows for fixed and variable taxation per service or per billing event within a Packag
- **Multi-currency support**
With a single TrueBill installation service providers can offer their services in multiple countries and currencies
- **Time-zone independence**
Time presentations are user specific and customizable on the fly

- **Settlement**
TrueBill allows for real time efficient management of the supplier value chain including costs, commissions, royalties etc.
- **Support for dynamic charge events**
Administrators can use custom filters to trigger rate plan switching or special charge handling

System Architecture and Components

Mediation Engine

Highly flexible and customizable mediation engine with no compromise on performance

Charging and Rating Engine

Provides unsurpassed flexibility and performance

Billing Engine

Invoices and settlement reports generation; generation of internal charge events etc.

Provisioning Application

Intuitive easy to use web portal for system administration

Reporting Application

Allows administrators to prepare custom report templates or use one of the standard report templates

CRM Portal

End user interface portal for management of subscriber information

WaS/SOAP Development APIs

Allows customers to easily build their in-house custom applications on top of TrueBill or just integrate 3rd party solutions

RDBMS

The heart of the system

In today's world, service providers are challenged with an extremely dynamic and rapidly changing environment. With new services and applications being launched and old services being replaced, service providers must adapt quickly in order to be competitive and stay in business. The digital home is now a reality, and people now demand even more services while on the go. How is your company going to catch up?